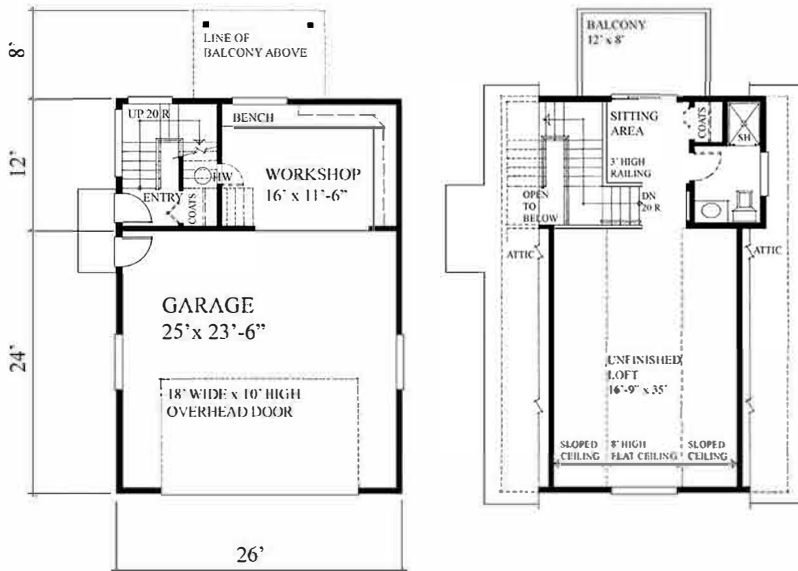


# Regan Swallow Design Ltd.

## Plan 1626



The oversized 18' wide by 10' high overhead garage door and 11'-6" ceiling height makes this a truly versatile RV Garage space.

The spacious open workshop has ample workbench length with numerous upper storage cabinets and is well lit with the rear facing window location.

The unfinished second level with vaulted ceilings is intentionally left undeveloped to allow your personalization of this space. A shed dormer contains a bathroom conveniently located at the top of the uniquely designed staircase.

Plans are designed with a concrete slab foundation plan.