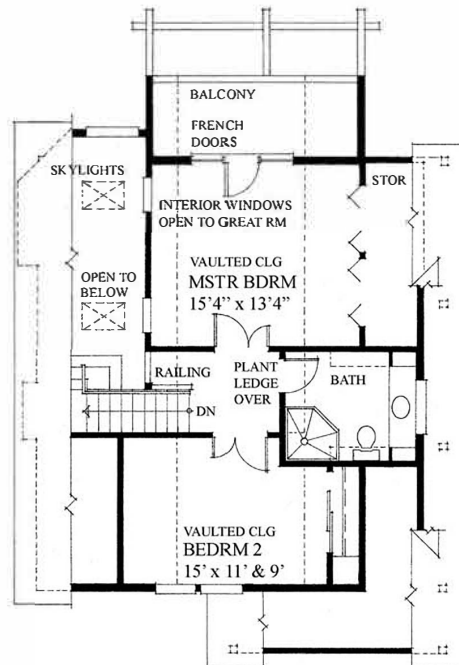
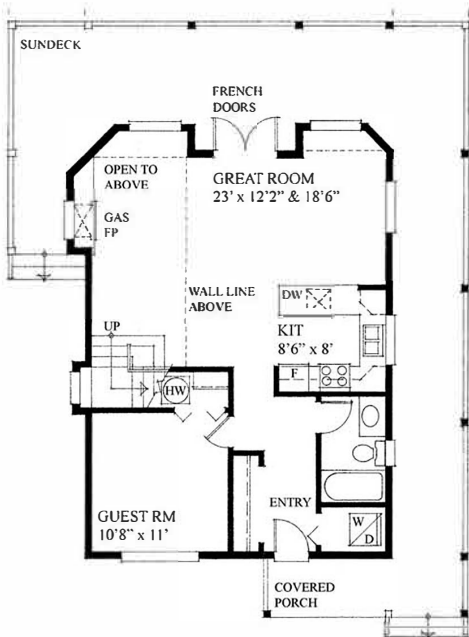


# Regan Swallow Design Ltd.

## Plan 1370 no basement



This separated three bedroom vacation retreat boasts a warming gas fireplace in the Great Room that opens up to an inviting wrap around multi purpose deck through double French doors.

With the entire Kitchen being open to the Great Room it makes this a truly open and expansive versatile year round living space.

The upstairs Master Bedroom has two interior functionally opening windows that overlook the Great Room below creating a unique look and feel to this suite. Two skylights aligned with these windows flood this area with natural warming light. A private secluded personal balcony is accessed via triple French doors for those quiet reflective moments or sunset salutes.

Plans designed with either a crawl space foundation or a walk-out basement foundation plan. Please specify foundation preference at the time of ordering. Please note that the basement floor plan version is a mirror reverse image to that of the crawl space floor plan layout and has a more open kitchen layout, but the same overall footprint dimensions. A right reading reverse plan is available for both the crawl space and basement versions.